

**CERTIFICATE OF ANALYSIS**

<b>Product Name</b>	TpD peptide, Cat.#: 319294
<b>Lot No.</b>	MTFA30998-0218
<b>Sequence</b>	ILMQYIKANSKFIGIPMGLPQSIALSSLMVAQ
<b>Dissolution condition</b>	15%ACN+85%H2O
<b>Length</b>	32AA
<b>Modification</b>	N/A
<b>Molecular Weight (MW)</b>	3464.22
<b>Storage</b>	-20°C

<b>Test Items</b>	<b>Specifications</b>	<b>Results</b>
MW by MS	3464.25	Conforms
Purity by HPLC	>95%	95.423%
Peptide content	N/A	N/A
Moisture content	N/A	N/A
Acetic acid content	N/A	N/A
Appearance	White to off-white lyophilized powder	Conforms
Quantity	20mg	5.0mg*4

NovoPro Bioscience Inc. (hereafter NovoPro) warrants material of said quality at the time of sale. It is the sole responsibility of the customers to determine the adequacy of all materials for any intended or specific purpose or use. NovoPro's sole obligation is to replace the material up to the extent of the purchase price. This warranty applies only to products in original packaging and does not apply to a product which has been tampered with or altered in any way in or which has been misused or damaged by accident or negligence. All claims must be received writing (by fax or email) within 30 days from date when product arrive at the destination city and failure to do so shall constitute a waiver by customers for any and all such claims.

Certified by:



Quality Assurance Department

Mar/13/2024

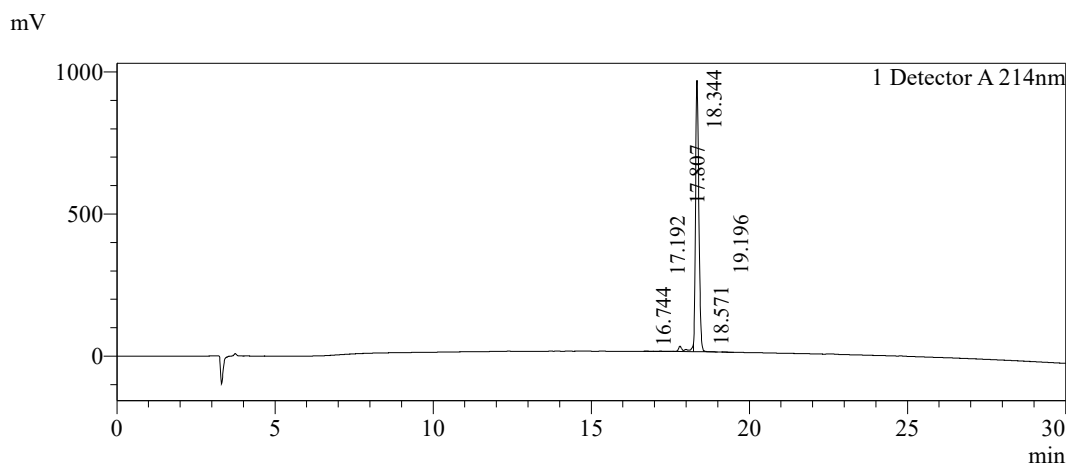


### Sample Information

Order ID :MTFA30998  
 Name :TpD peptide  
 Sequence :ILMQYIKANSKFIGIPMGLPQSIALSSLMVAQ  
 Lot. No :MTFA30998-0218  
 Pump A :0.1%Trifluoroacetic in 100% water  
 Pump B :0.1%Trifluoroacetic in 100% acetonitrile  
 Total Flow :1ml/min  
 Wavelength :214nm  
 Analytical column type :Kromasil 100-5-C18 (4.6\*250mm\*5 μm)  
 Dissolution method :15%ACN+85%H2O  
 Inj. Volume : 25ul

Time	Module	Action	Value
0.01	Pumps	B.Conc	25
30.00	Pumps	B.Conc	55
33.00	Pumps	B.Conc	100
38.00	Pumps	B.Conc	100
40.00	Pumps	B.Conc	25
50.00	Controller	Stop	

### Chromatogram

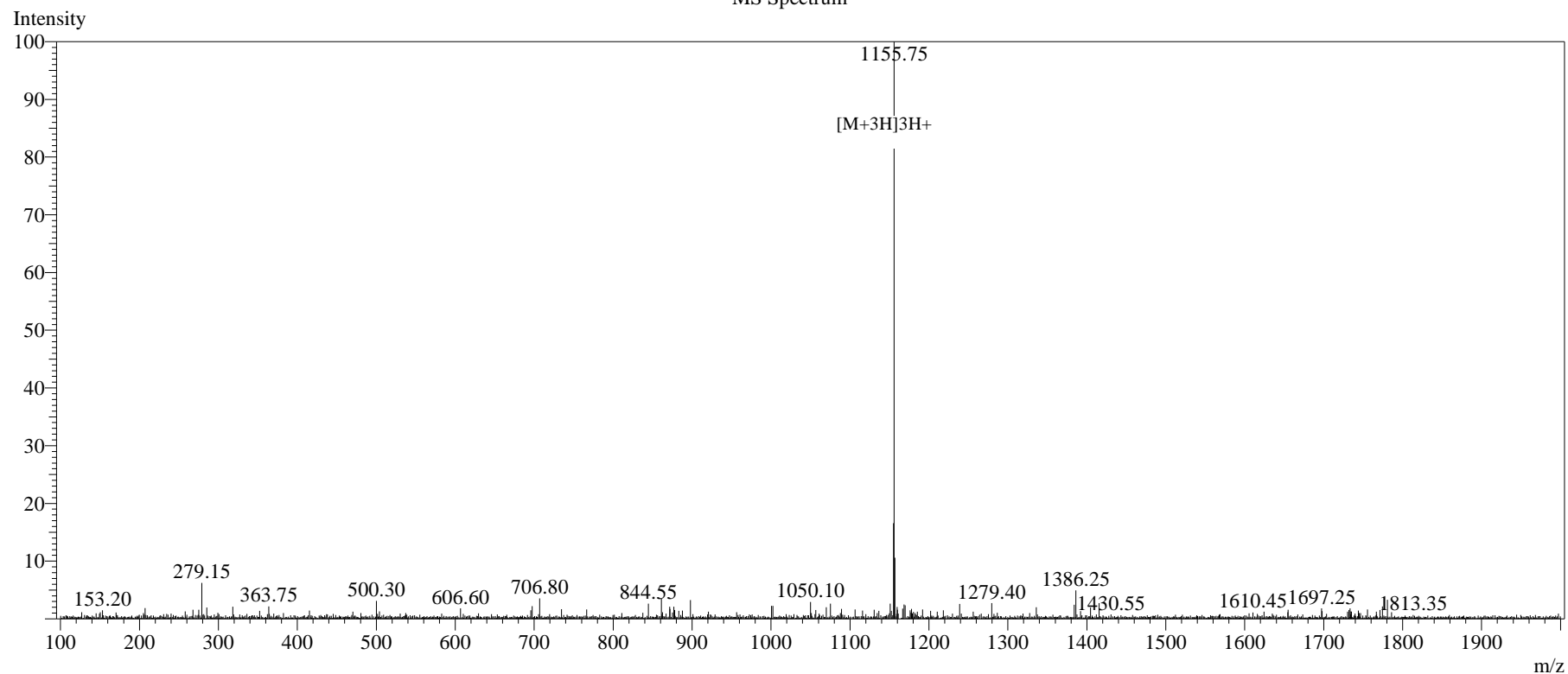


### Peak Table

Detector A 214nm

Peak#	Ret. Time	Area	Height	Area%
1	16.744	6507	876	0.089
2	17.192	13792	894	0.189
3	17.807	288250	18394	3.953
4	18.344	6958692	955115	95.423
5	18.571	22222	3437	0.305
6	19.196	3002	373	0.041
Total		7292465	979089	100.000

## MS Spectrum



## Sample Information

Dissolution method	:15% ACN+85% H <sub>2</sub> O	Interface	:ESI	Prerod Bias	:+4.5kv
Date Acquired	:2024/03/06 14:08:33	Nebulizing Gas Flow	:1.50L/min	Detector	:-0.2kv
Injection Volume	:0.2ul	CDL Temp	:250°C	T.Flow	:0.2ml/min
Block Temp	:200	CDL Volt	:0v	B.conc	:50% H <sub>2</sub> O/50% MEOH

Order ID	:MTFA30998
Name	:TpD peptide
Sequence	:ILMQYIKANSKFIGIPMGLPQSIALSSLMVAQ
Lot.No	:MTFA30998-0218
Theoretical	:3464.22
Observed	:3464.25