

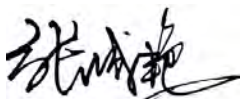
## CERTIFICATE OF ANALYSIS

<b>Product Name</b>	RI-muEIP1 (Retroinverso muEIP1) peptide, Cat.#: 318863
<b>Lot No.</b>	MTFA30517-3-0925
<b>Sequence</b>	grrrqrkkrggtflgppl (all D-amino acids)
<b>Dissolution condition</b>	100%H <sub>2</sub> O
<b>Length</b>	19AA
<b>Modification</b>	lowercase=D-form amino acid
<b>Molecular Weight (MW)</b>	2236.63
<b>Storage</b>	-20°C

Test Items	Specifications	Results
MW by MS	2236.50	Conforms
Purity by HPLC	>95%	95.702%
Peptide Content	N/A	N/A
Moisture content	N/A	N/A
Acetic acid content	N/A	N/A
Appearance	White to off-white lyophilized powder	Conforms
Quantity	10mg	5.0mg*2

NovoPro Bioscience Inc. (hereafter NovoPro) warrants material of said quality at the time of sale. It is the sole responsibility of the customers to determine the adequacy of all materials for any intended or specific purpose or use. NovoPro's sole obligation is to replace the material up to the extent of the purchase price. This warranty applies only to products in original packaging and does not apply to a product which has been tampered with or altered in any way in or which has been misused or damaged by accident or negligence. All claims must be received writing (by fax or email) within 30 days from date when product arrive at the destination city and failure to do so shall constitute a waiver by customers for any and all such claims.

Certified by:



Quality Assurance Department

Oct/20//2023

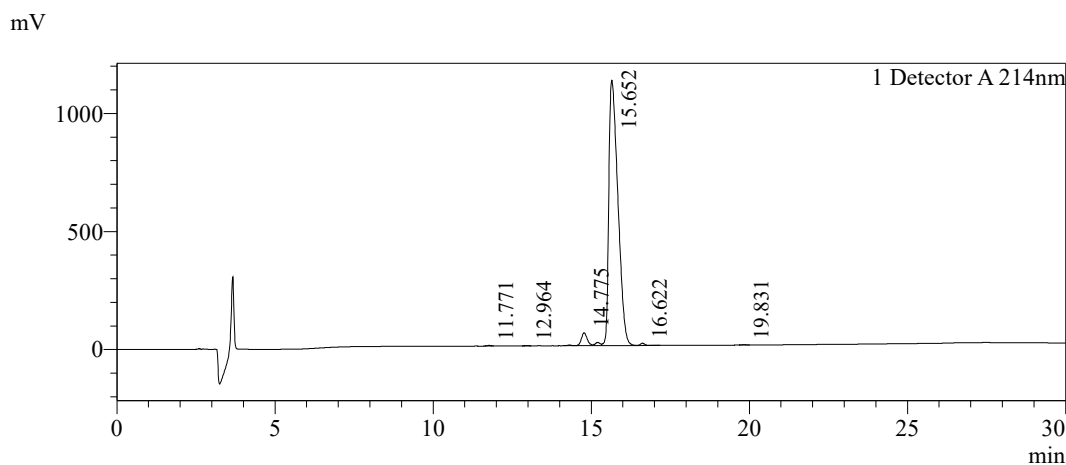


### Sample Information

Order ID :MTFA30517-3  
 Name :RI-muEIP1 peptide  
 Sequence :grrrqrkkrggtflgppl  
 Lot. No :MTFA30517-3-0925  
 Pump A :0.1%Trifluoroacetic in 100% water  
 Pump B :0.1%Trifluoroacetic in 100% acetonitrile  
 Total Flow :1ml/min  
 Wavelength :214nm  
 Analytical column type :Phenomenex Luna® 5 µm C18(2) (4.6\*250mm\*5 µm)  
 Dissolution method :100%H2O  
 Inj. Volume : 15ul

Time	Module	Action	Value
0.01	Pumps	B.Conc	15
30.00	Pumps	B.Conc	45
33.00	Pumps	B.Conc	100
38.00	Pumps	B.Conc	100
40.00	Pumps	B.Conc	15
50.00	Controller	Stop	

### Chromatogram

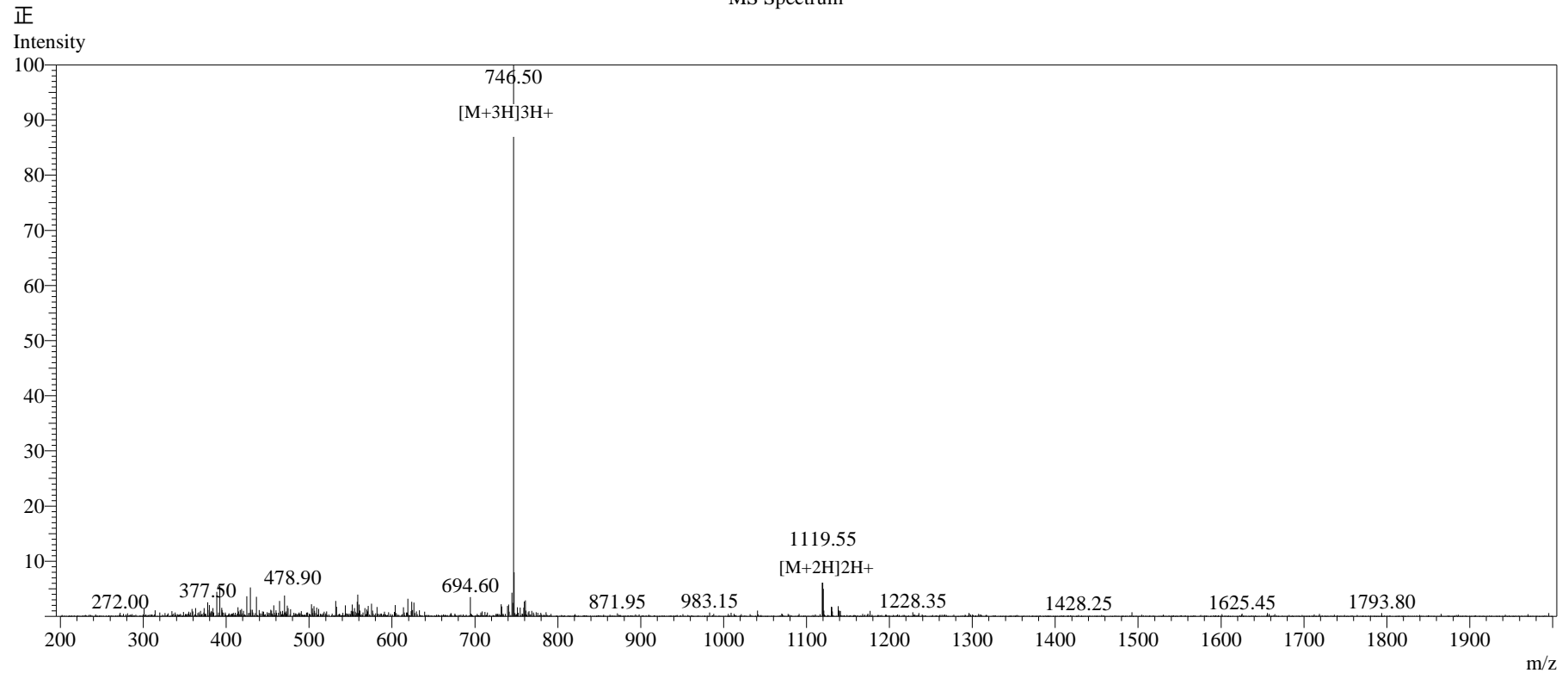


### Peak Table

Detector A 214nm

Peak#	Ret. Time	Area	Height	Area%
1	11.771	17322	2378	0.074
2	12.964	10756	1373	0.046
3	14.775	870319	54325	3.712
4	15.652	22440244	1123810	95.702
5	16.622	95964	9670	0.409
6	19.831	13366	1735	0.057
Total		23447972	1193290	100.000

## MS Spectrum



## Sample Information

Dissolution method	:15% ACN+85% H <sub>2</sub> O	Interface	:ESI	Prerod Bias	:+4.5kv
Date Acquired	:2023/09/28 13:30:12	Nebulizing Gas Flow	:1.50L/min	Detector	:-0.2kv
Injection Volume	:0.2ul	CDL Temp	:250°C	T.Flow	:0.2ml/min
Block Temp	:200	CDL Volt	:0v	B.conc	:50% H <sub>2</sub> O/50% MEOH

Order ID	:MTFA30517-3
Name	:RI-muEIP1 peptide
Sequence	:grrrqrkkrggtflgpppl
Lot.No	:MTFA30517-3-0925
Theoretical	:2236.63
Observed	:2236.50