

---

**CERTIFICATE OF ANALYSIS**

<b>Product Name</b>	Pinealon peptide, Cat.#: 319696 (TFA removed)
<b>Lot No.</b>	MTFB20431-260105
<b>Sequence</b>	EDR (Acetate Salt)
<b>Dissolution condition</b>	100%H <sub>2</sub> O
<b>Modification</b>	acetate salt
<b>Molecular Weight (MW)</b>	418.41
<b>Storage</b>	-20°C

---

Test Items	Specifications	Results
<b>MW by MS</b>	418.30	Conforms
<b>Purity by HPLC</b>	>95%	95.584%
Endotoxin Content	N/A	N/A
TFA solubility	N/A	N/A
<b>Moisture content</b>	N/A	N/A
<b>Acetic acid content</b>	N/A	N/A
<b>Appearance</b>	White to off-white lyophilized powder	Conforms
<b>Quantity</b>	30mg	5.0mg*6

---

NovoPro Bioscience Inc. (hereafter NovoPro) warrants material of said quality at the time of sale. It is the sole responsibility of the customers to determine the adequacy of all materials for any intended or specific purpose or use. NovoPro's sole obligation is to replace the material up to the extent of the purchase price. This warranty applies only to products in original packaging and does not apply to a product which has been tampered with or altered in any way in or which has been misused or damaged by accident or negligence. All claims must be received writing (by fax or email) within 30 days from date when product arrive at the destination city and failure to do so shall constitute a waiver by customers for any and all such claims.

Certified by:



Jan/07/2026

Quality Assurance Department

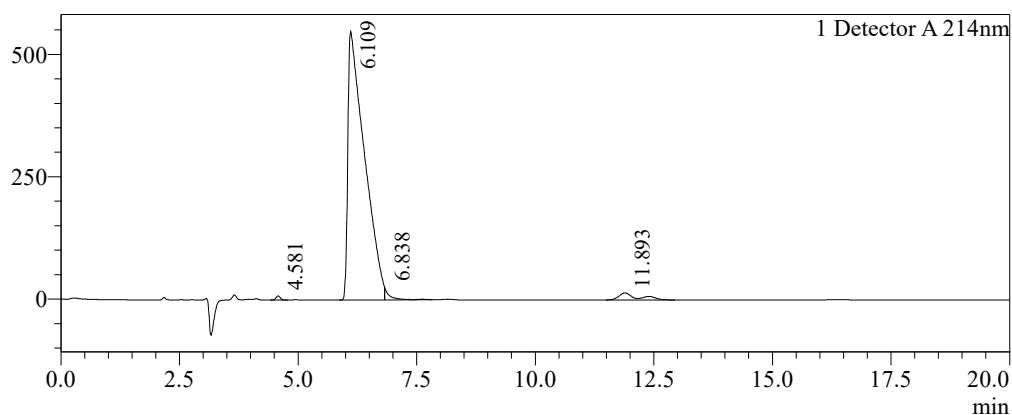


### Sample Information

Order ID	:MTFB20431		
Name	:Pinealon		
Sequence	:EDR (Acetate Salt)		
Lot. No	:MTFB20431-260105		
Pump A	:0.1%Trifluoroacetic in 100% water		
Pump B	:0.1%Trifluoroacetic in 100% acetonitrile		
Total Flow	:1ml/min		
Wavelength	:214nm		
Analytical column type	:Kromasil 100-5-C18 (4.6*250mm*5 µm)		
Dissolution method	:100%H2O		
Inj. Volume	: 10ul		
Time	Module	Action	Value
0.01	Pumps	B.Conc	0.1
20.00	Pumps	B.Conc	0.1
33.00	Pumps	B.Conc	100
38.00	Pumps	B.Conc	100
40.00	Pumps	B.Conc	0.1
50.00	Controller	Stop	

### Chromatogram

mV

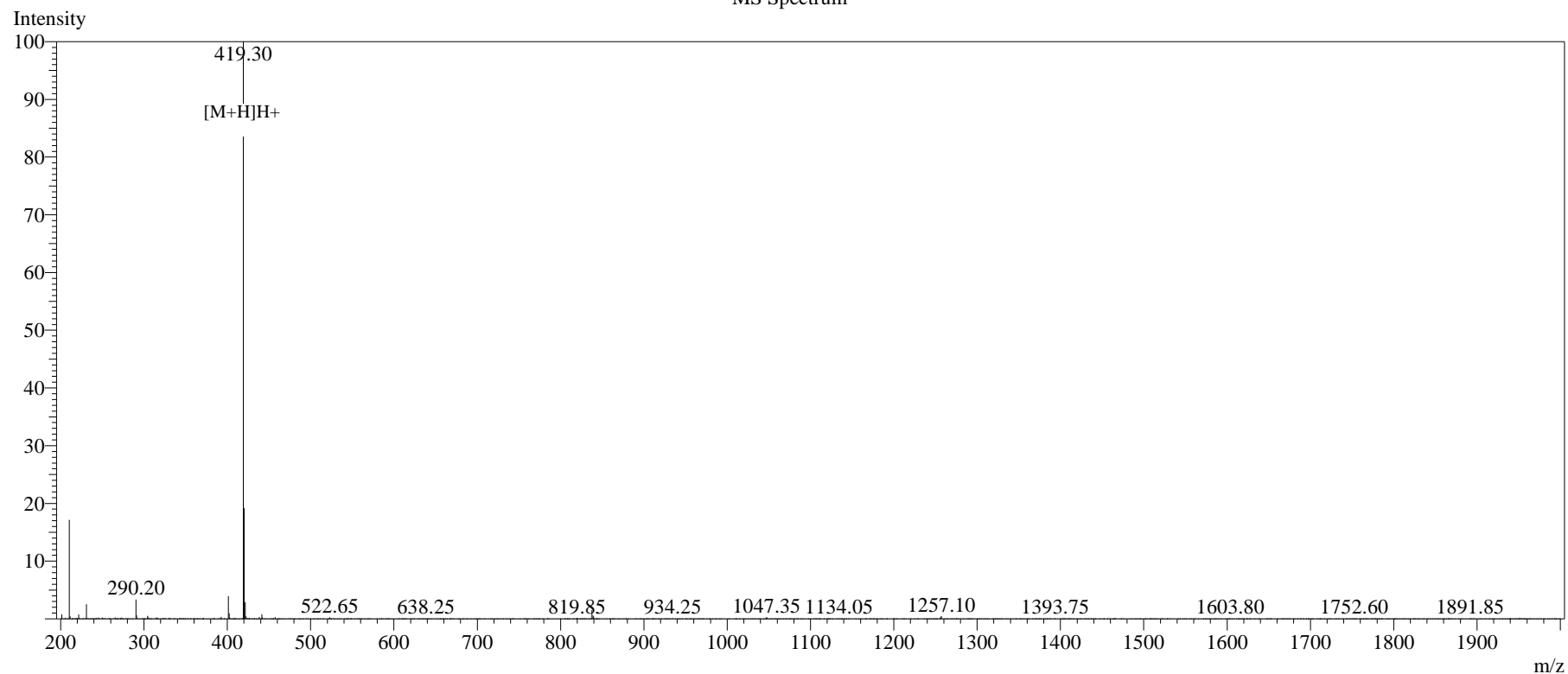


### Peak Table

Detector A 214nm

Peak#	Ret. Time	Area	Height	Area%
1	4.581	53198	8374	0.381
2	6.109	13352426	548440	95.584
3	6.838	169514	23502	1.213
4	11.893	394181	14303	2.822
Total		13969319	594619	100.000

# MS Spectrum



## Sample Information

Dissolution method :15% ACN+85% H<sub>2</sub>O  
 Date Acquired :2026/01/06 11:06:07  
 Injection Volume :0.2ul  
 Block Temp :200

Interface :ESI  
 Nebulizing Gas Flow :1.50L/min  
 CDL Temp :250°C  
 CDL Volt :0v

Prerod Bias :+4.5kv  
 Detector :-0.2kv  
 T.Flow :0.2ml/min  
 B.conc :50% H<sub>2</sub>O/50% ME OH

Order ID :MTFB20431  
 Name :Pinealon  
 Sequence :EDR (Acetate Salt)  
 Lot.No :MTFB20431-260105  
 Theoretical :418.41  
 Observed :418.30