

**CERTIFICATE OF ANALYSIS**

<b>Product Name</b>	Peptide E-4, Cat.#: 303913
<b>Lot No.</b>	MTFA32313-0108
<b>Sequence</b>	RVISLPAGLSPLRI
<b>Dissolution condition</b>	100%H <sub>2</sub> O
<b>Length</b>	14AA
<b>Modification</b>	N/A
<b>Molecular Weight (MW)</b>	1491.81
<b>Storage</b>	-20°C

Test Items	Specifications	Results
<b>MW by MS</b>	1492.05	Conforms
<b>Purity by HPLC</b>	>95%	97.751%
<b>Peptide content</b>	N/A	N/A
<b>Moisture content</b>	N/A	N/A
<b>Acetic acid content</b>	N/A	N/A
<b>Appearance</b>	White to off-white lyophilized powder	Conforms
<b>Quantity</b>	10mg	5.0mg*2

NovoPro Bioscience Inc. (hereafter NovoPro) warrants material of said quality at the time of sale. It is the sole responsibility of the customers to determine the adequacy of all materials for any intended or specific purpose or use. NovoPro's sole obligation is to replace the material up to the extent of the purchase price. This warranty applies only to products in original packaging and does not apply to a product which has been tampered with or altered in any way in or which has been misused or damaged by accident or negligence. All claims must be received writing (by fax or email) within 30 days from date when product arrive at the destination city and failure to do so shall constitute a waiver by customers for any and all such claims.

Certified by:



Quality Assurance Department

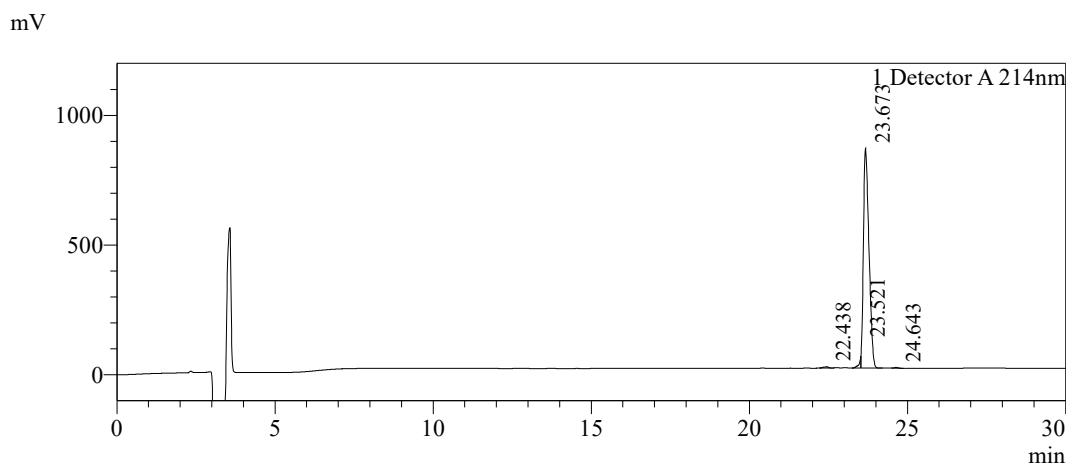
Jan/20/2025



### Sample Information

Order ID	:MTFA32313		
Name	:Peptide E-4		
Sequence	:RVISLPAGLSPLRI		
Lot. No	:MTFA32313-0108		
Pump A	:0.1%Trifluoroacetic in 100% water		
Pump B	:0.1%Trifluoroacetic in 100% acetonitrile		
Total Flow	:1ml/min		
Wavelength	:214nm		
Analytical column type	:Kromasil 100-5-C18 (4.6*250mm*5 µm)		
Dissolution method	:100%H <sub>2</sub> O		
Inj. Volume	: 30ul		
Time	Module	Action	Value
0.01	Pumps	B.Conc	20
30.00	Pumps	B.Conc	50
33.00	Pumps	B.Conc	100
38.00	Pumps	B.Conc	100
40.00	Pumps	B.Conc	20
50.00	Controller	Stop	

### Chromatogram

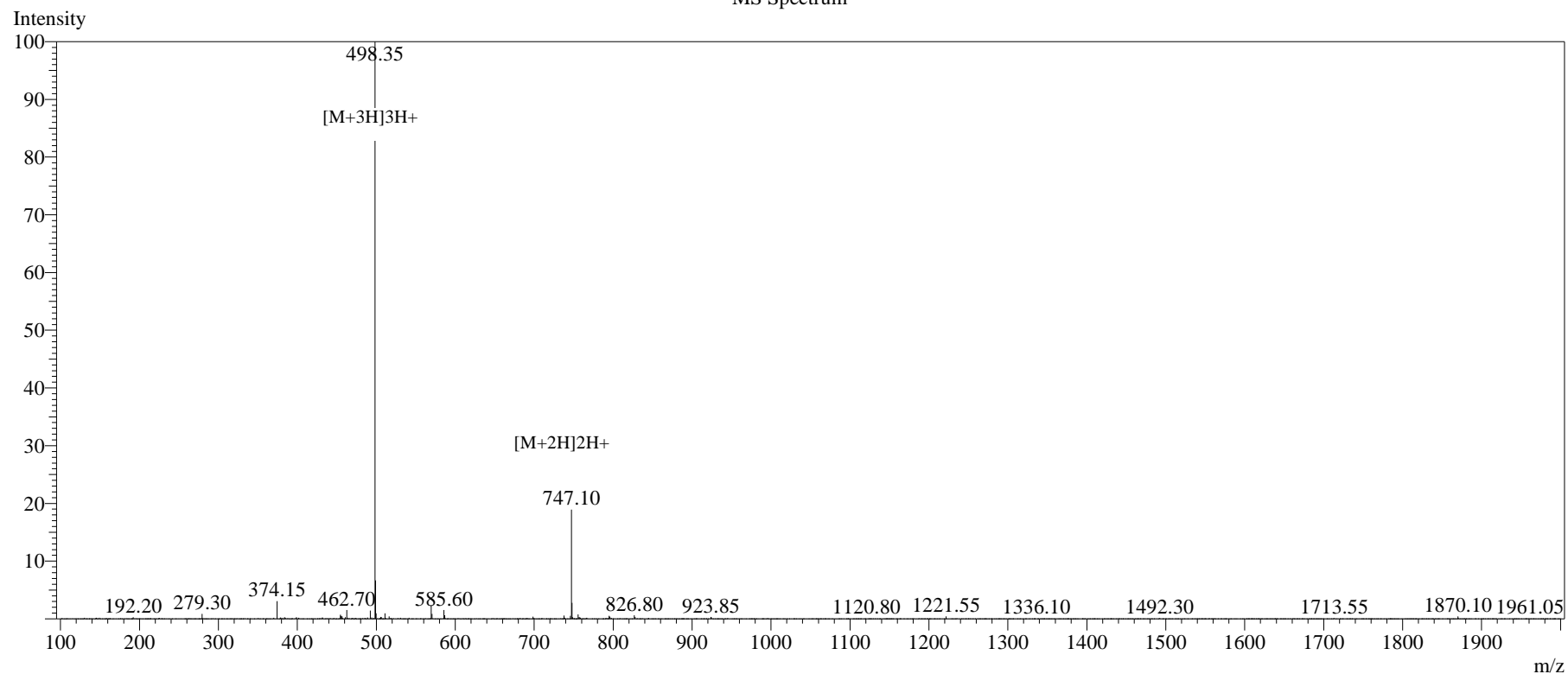


### Peak Table

Detector A 214nm

Peak#	Ret. Time	Area	Height	Area%
1	22.438	54243	4433	0.513
2	23.521	161642	36471	1.530
3	23.673	10330310	845788	97.751
4	24.643	21735	2578	0.206
Total		10567930	889269	100.000

## MS Spectrum



## Sample Information

Dissolution method :15%ACN+85%H2O  
 Date Acquired :2025/01/17 10:48:23  
 Injection Volume :0.2ul  
 Block Temp :200

Interface :ESI  
 Nebulizing Gas Flow :1.50L/min  
 CDL Temp :250°C  
 CDL Volt :0v

Prerod Bias :+4.5kv  
 Detector :-.0.2kv  
 T.Flow :0.2ml/min  
 B.conc :50% H2O/50% MEOH

Order ID :MTFA32313  
 Name :Peptide E-4  
 Sequence :RVISLPAGLSPLRI  
 Lot.No :MTFA32313-0108  
 Theoretical :1491.81  
 Observed :1492.05