

CERTIFICATE OF ANALYSIS

Product Name	M2pep peptide, Cat.#: 319211
Lot No.	MTFA33043-250709
Sequence	YEQDPWGVKWWY
Dissolution condition	100%H ₂ O
Modification	N/A
Molecular Weight (MW)	1656.79
Storage	-20°C

Test Items	Specifications	Results
MW by MS	1656.80	Conforms
Purity by HPLC	>95%	97.739%
Peptide content	N/A	N/A
Moisture content	N/A	N/A
Acetic acid content	N/A	N/A
Appearance	White to off-white lyophilized powder	Conforms
Quantity	20mg	5.0mg*4

NovoPro Bioscience Inc. (hereafter NovoPro) warrants material of said quality at the time of sale. It is the sole responsibility of the customers to determine the adequacy of all materials for any intended or specific purpose or use. NovoPro's sole obligation is to replace the material up to the extent of the purchase price. This warranty applies only to products in original packaging and does not apply to a product which has been tampered with or altered in any way in or which has been misused or damaged by accident or negligence. All claims must be received writing (by fax or email) within 30 days from date when product arrive at the destination city and failure to do so shall constitute a waiver by customers for any and all such claims.

Certified by: 

Jul/10/2025

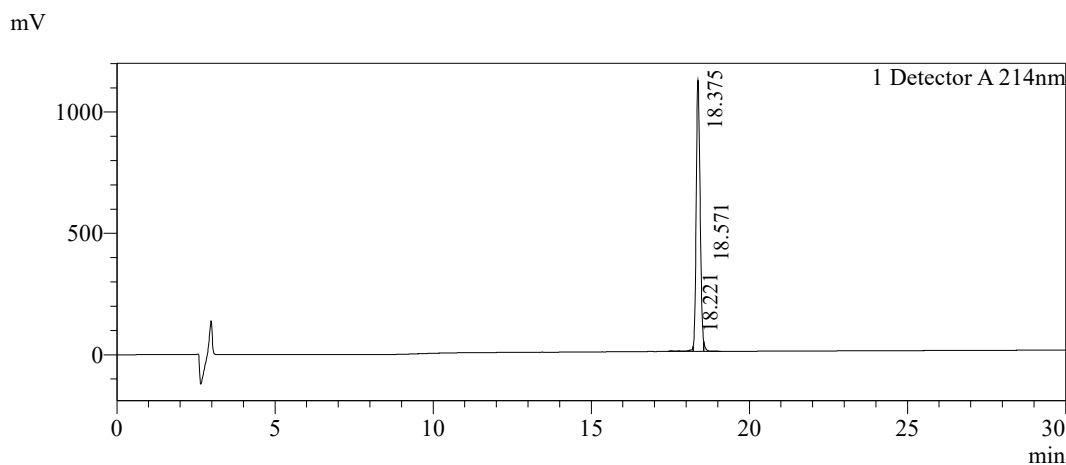
Quality Assurance Department



Sample Information

Order ID	:MTFA33043		
Name	:M2pep peptide		
Sequence	:YEQDPWGVKWWY		
Lot. No	:MTFA33043-250709		
Pump A	:0.1%Trifluoroacetic in 100% water		
Pump B	:0.1%Trifluoroacetic in 100% acetonitrile		
Total Flow	:1ml/min		
Wavelength	:214nm		
Analytical column type	:Kromasil 100-5-C18 (4.6*250mm*5 µm)		
Dissolution method	:100%H ₂ O		
Inj. Volume	: 10ul		
Time	Module	Action	Value
0.01	Pumps	B.Conc	25
30.00	Pumps	B.Conc	55
33.00	Pumps	B.Conc	100
38.00	Pumps	B.Conc	100
40.00	Pumps	B.Conc	25
50.00	Controller	Stop	

Chromatogram

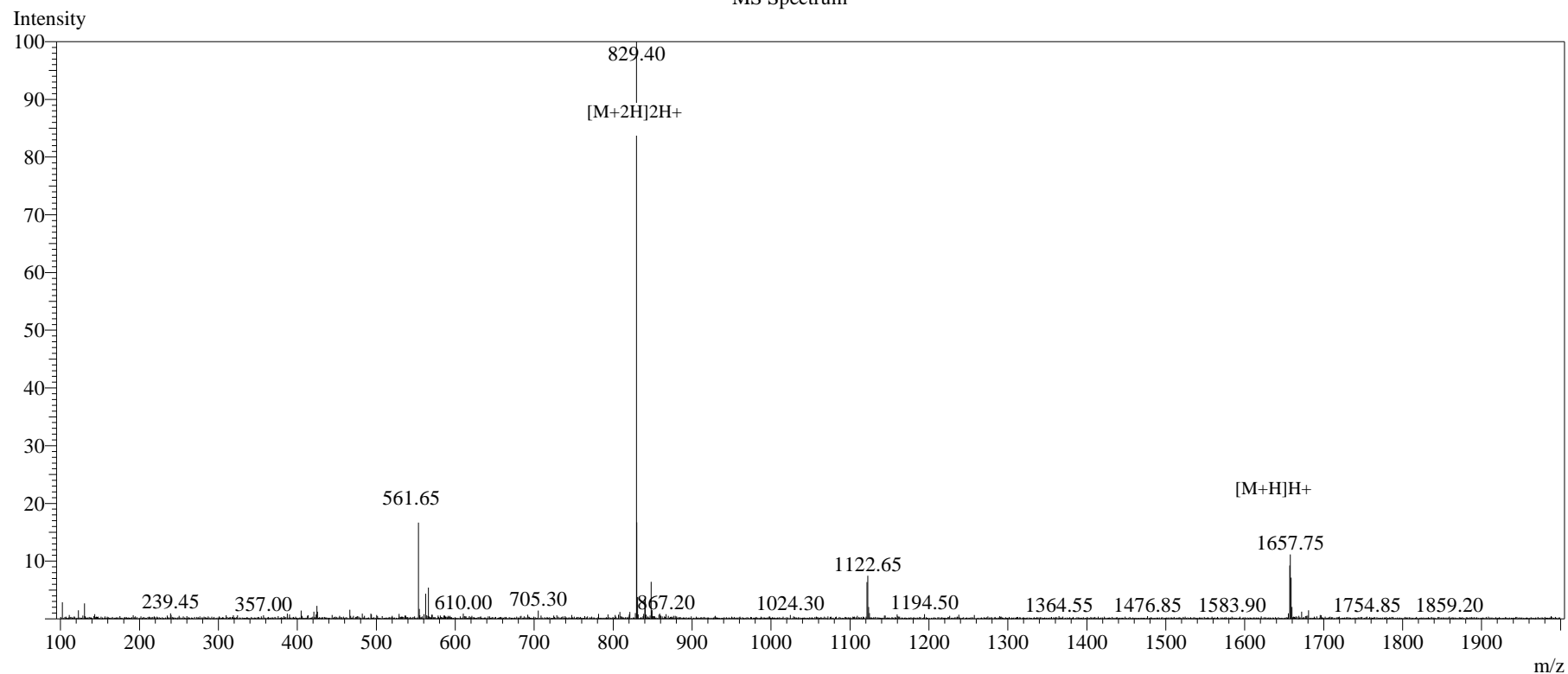


Peak Table

Detector A 214nm

Peak#	Ret. Time	Area	Height	Area%
1	18.221	102773	15165	1.045
2	18.375	9609533	1116287	97.739
3	18.571	119488	33305	1.215
Total		9831794	1164757	100.000

MS Spectrum



Sample Information

Dissolution method	:15% ACN+85% H ₂ O	Interface	:ESI	Prerod Bias	:+4.5kv
Date Acquired	:2025/07/09 14:46:46	Nebulizing Gas Flow	:1.50L/min	Detector	:-0.2kv
Injection Volume	:0.2ul	CDL Temp	:250°C	T.Flow	:0.2ml/min
Block Temp	:200	CDL Volt	:0v	B.conc	:50% H ₂ O/50% ME OH
Order ID	:MTFA33043				
Name	:M2pep peptide				
Sequence	:YEQDPWGVKWWY				
Lot.No	:MTFA33043-250709				
Theoretical	:1656.79				
Observed	:1656.80				