
CERTIFICATE OF ANALYSIS

Product Name	N-lactoyl-phenylalanine (Lac-Phe) peptide, Cat.#: 318943-TFA
Lot No.	MTFA30726
Sequence	Lac-Phe-OH (TFA removed, Acetate salt)
Dissolution condition	100%H ₂ O
Length	2 AA
Modification	N/A
Molecular Weight (MW)	237.25
Storage	-20°C

Test Items	Specifications	Results
MW by MS	237.25	Conforms
Purity by HPLC	>95%	98.108%
Peptide Content	N/A	N/A
Moisture content	N/A	N/A
Acetic acid content	N/A	N/A
Appearance	White to off-white lyophilized powder	Conforms
Quantity	4,000 mg	50mg*80

NovoPro Bioscience Inc. (hereafter NovoPro) warrants material of said quality at the time of sale. It is the sole responsibility of the customers to determine the adequacy of all materials for any intended or specific purpose or use. NovoPro's sole obligation is to replace the material up to the extent of the purchase price. This warranty applies only to products in original packaging and does not apply to a product which has been tampered with or altered in any way in or which has been misused or damaged by accident or negligence. All claims must be received writing (by fax or email) within 30 days from date when product arrive at the destination city and failure to do so shall constitute a waiver by customers for any and all such claims.

Certified by:



Quality Assurance Department

Nov/27/2023



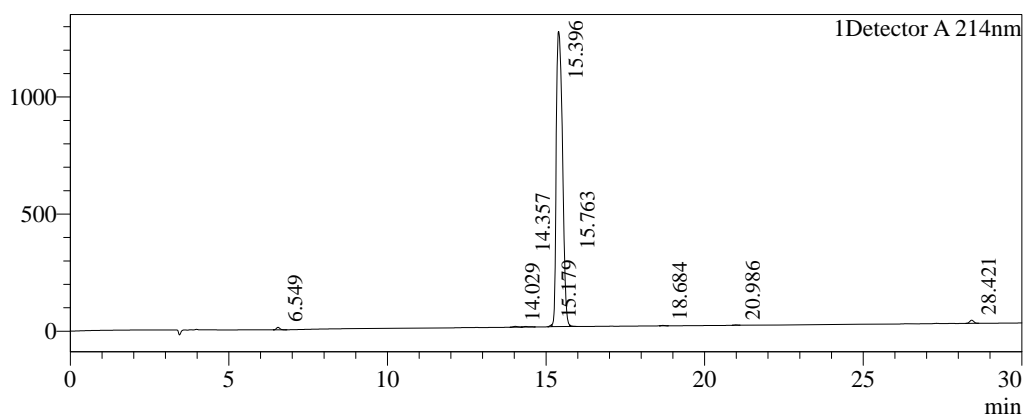
Sample Information

Order ID :MTFA30726
 Name :N-lactoyl-phenylalanine (Lac-Phe) peptide
 Sequence :Lac-Phe
 Pump A :0.1% Trifluoroacetic in 100% water
 Pump B :0.1% Trifluoroacetic in 100% acetonitrile
 Total Flow :1ml/min
 Wavelength :214nm
 Analytical column type :Inertsil ODS-SP C18 (4.6*250mm*5um)
 Dissolution method :100%H2O
 Inj. Volume : 5ul

Time	Module	Action	Value
0.01	Pumps	B.Conc	15
30.00	Pumps	B.Conc	45
33.00	Pumps	B.Conc	100
38.00	Pumps	B.Conc	100
40.00	Pumps	B.Conc	15
50.00	Controller	Stop	

Chromatogram

mV

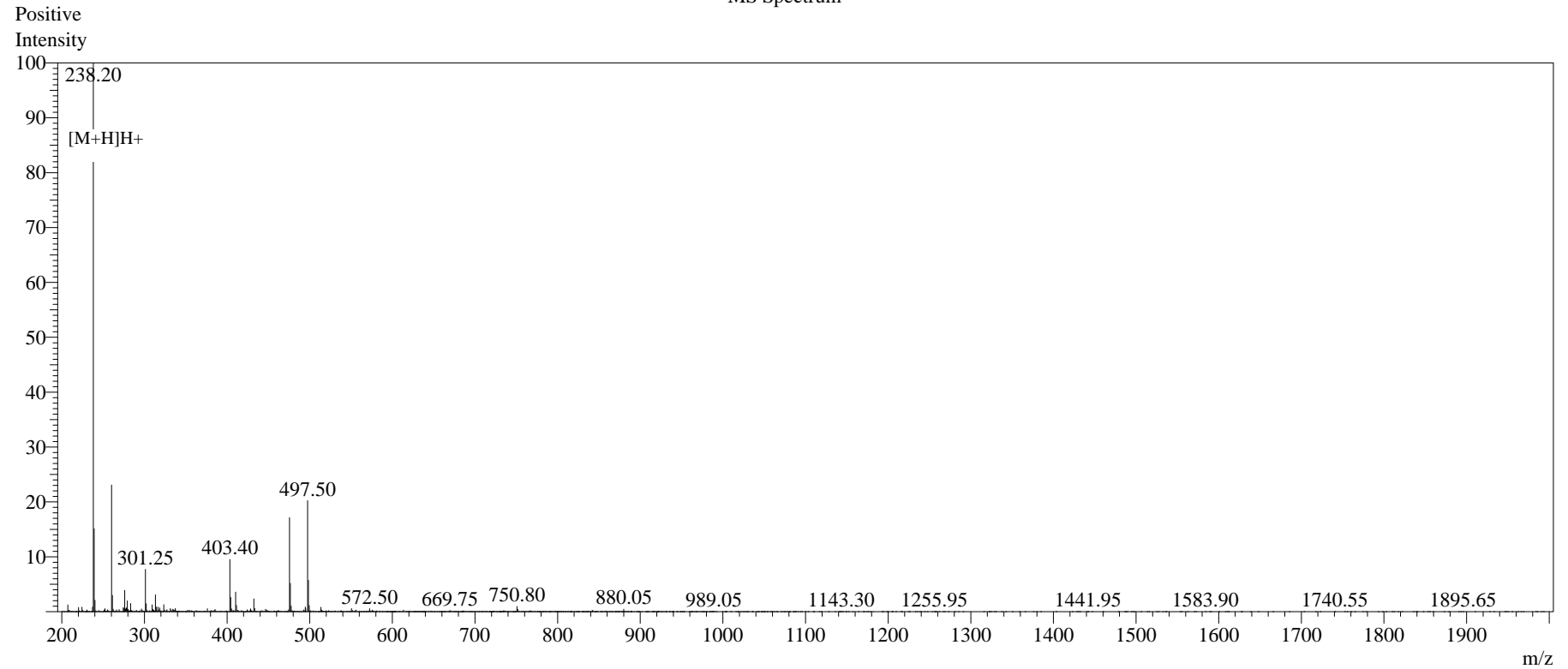


Peak Table

Detector A 214nm

Peak#	Ret. Time	Area	Height	Area%
1	6.549	81750	10749	0.464
2	14.029	32129	3354	0.182
3	14.357	27666	2409	0.157
4	15.179	30921	7820	0.176
5	15.396	17277879	1259840	98.108
6	15.763	16712	4947	0.095
7	18.684	12727	1680	0.072
8	20.986	10857	1423	0.062
9	28.421	120442	13408	0.684
Total		17611083	1305630	100.000

MS Spectrum



Sample Information

Dissolution method	:15% ACN+85% H ₂ O	Interface	:ESI	Prerod Bias	:+4.5kv
Date Acquired	:2023/11/27 11:03:25	Nebulizing Gas Flow	:1.50L/min	Detector	:-0.2kv
Injection Volume	:0.2ul	CDL Temp	:250°C	T.Flow	:0.2ml/min
Block Temp	:200	CDL Volt	:0v	B.conc	:50% H ₂ O/50% MEOH

Order ID	:MTFA30726
Name	:N/A
Sequence	:Lac-Phe
Lot.No	:MTFA30726-1027
Theoretical	:237.25
Observed	:237.20