

## CERTIFICATE OF ANALYSIS

Product Name	Elamipretide/SS-31, Cat.#: 318879
Lot No.	MTFB20394-251219
Sequence	{D-Arg}-{Dmt}-Lys-Phe-NH <sub>2</sub>
Dissolution condition	100%H <sub>2</sub> O
Modification	N/A
Molecular Weight (MW)	639.73
Storage	-20°C

Test Items	Specifications	Results
MW by MS	639.80	Conforms
Purity by HPLC	>95%	97.883%
Endotoxin Content	N/A	N/A
TFA solubility	N/A	N/A
Moisture content	N/A	N/A
Acetic acid content	N/A	N/A
Appearance	White to off-white lyophilized powder	Conforms
Quantity	200mg	5.0mg*40

NovoPro Bioscience Inc. (hereafter NovoPro) warrants material of said quality at the time of sale. It is the sole responsibility of the customers to determine the adequacy of all materials for any intended or specific purpose or use. NovoPro's sole obligation is to replace the material up to the extent of the purchase price. This warranty applies only to products in original packaging and does not apply to a product which has been tampered with or altered in any way in or which has been misused or damaged by accident or negligence. All claims must be received writing (by fax or email) within 30 days from date when product arrive at the destination city and failure to do so shall constitute a waiver by customers for any and all such claims.

Certified by:



Dec/23/2025

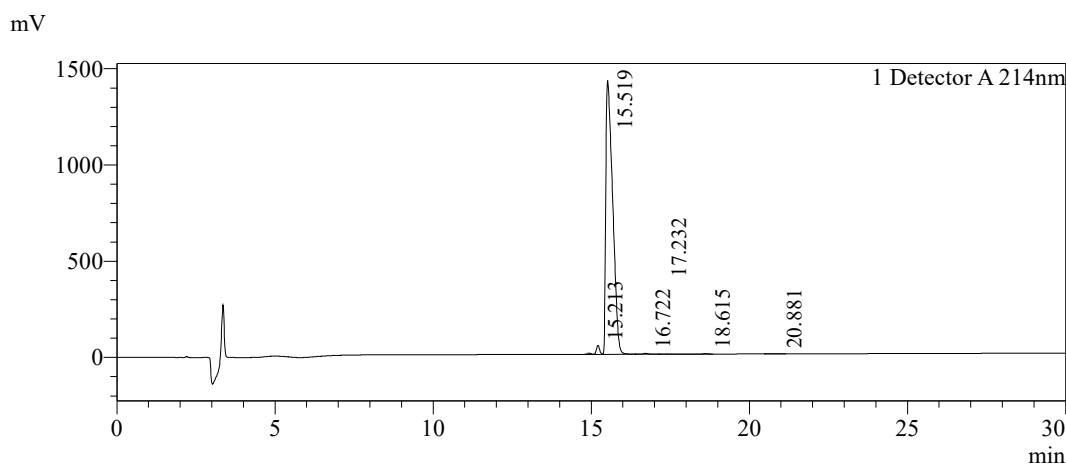
Quality Assurance Department



### Sample Information

Order ID	:MTFB20394		
Name	:Elamipretide/SS-31		
Sequence	:{D-Arg}-{Dmt}-Lys-Phe-NH2		
Lot. No	:MTFB20394-251219		
Pump A	:0.1%Trifluoroacetic in 100% water		
Pump B	:0.1%Trifluoroacetic in 100% acetonitrile		
Total Flow	:1ml/min		
Wavelength	:214nm		
Analytical column type	:Kromasil 100-5-C18 (4.6*250mm*5 μm)		
Dissolution method	:100%H2O		
Inj. Volume	: 15ul		
Time	Module	Action	Value
0.01	Pumps	B.Conc	10
30.00	Pumps	B.Conc	40
33.00	Pumps	B.Conc	100
38.00	Pumps	B.Conc	100
40.00	Pumps	B.Conc	10
50.00	Controller	Stop	

### Chromatogram

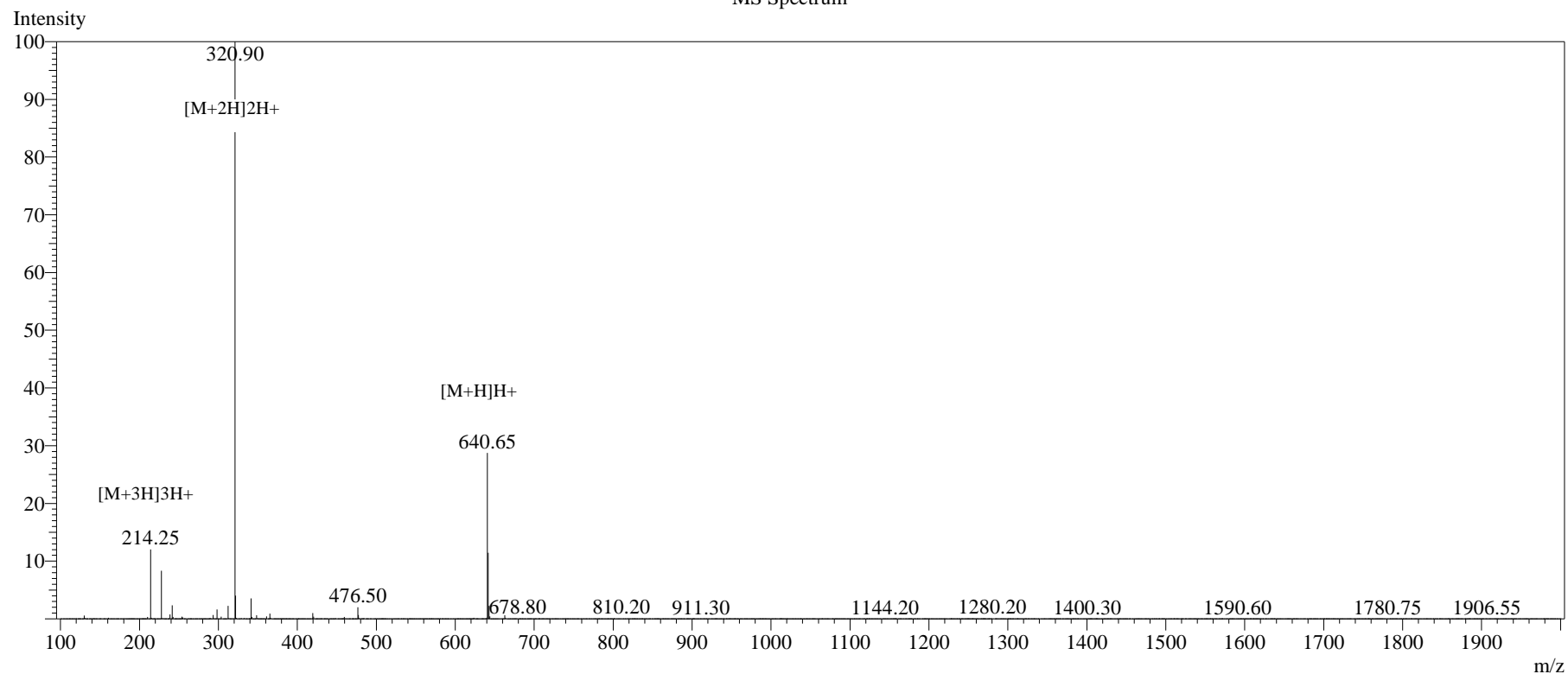


### Peak Table

Detector A 214nm

Peak#	Ret. Time	Area	Height	Area%
1	15.213	367712	46619	1.677
2	15.519	21468754	1422530	97.883
3	16.722	48696	4545	0.222
4	17.232	796	127	0.004
5	18.615	41285	2201	0.188
6	20.881	5942	258	0.027
Total		21933183	1476280	100.000

# MS Spectrum



## Sample Information

Dissolution method :15%ACN+85%H2O  
 Date Acquired :2025/12/22 10:04:09  
 Injection Volume :0.2ul  
 Block Temp :200

Interface :ESI  
 Nebulizing Gas Flow :1.50L/min  
 CDL Temp :250°C  
 CDL Volt :0v

Prerod Bias :+4.5kv  
 Detector :-0.2kv  
 T.Flow :0.2ml/min  
 B.conc :50% H2O/50% MEOH

Order ID :MTFB20394  
 Name :Elamipretide/SS-31  
 Sequence :{D-Arg}-{Dmt}-Lys-Phe-NH2  
 Lot.No :MTFB20394-251219  
 Theoretical :639.73  
 Observed :639.80