

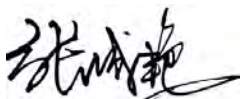
## CERTIFICATE OF ANALYSIS

<b>Product Name</b>	Development regulating peptide Hym-331, Cat.#: 319534
<b>Lot No.</b>	MTFA30481-5-0915
<b>Sequence</b>	GPPPGLW-NH2
<b>Dissolution condition</b>	100%H2O
<b>Length</b>	7AA
<b>Modification</b>	N/A
<b>Molecular Weight (MW)</b>	721.84
<b>Storage</b>	-20°C

<b>Test Items</b>	<b>Specifications</b>	<b>Results</b>
<b>MW by MS</b>	722.40	Conforms
<b>Purity by HPLC</b>	>95%	98.425%
<b>Peptide Content</b>	N/A	N/A
<b>Moisture content</b>	N/A	N/A
<b>Acetic acid content</b>	N/A	N/A
<b>Appearance</b>	White to off-white lyophilized powder	Conforms
<b>Quantity</b>	20mg	5.0mg*4

NovoPro Bioscience Inc. (hereafter NovoPro) warrants material of said quality at the time of sale. It is the sole responsibility of the customers to determine the adequacy of all materials for any intended or specific purpose or use. NovoPro's sole obligation is to replace the material up to the extent of the purchase price. This warranty applies only to products in original packaging and does not apply to a product which has been tampered with or altered in any way in or which has been misused or damaged by accident or negligence. All claims must be received writing (by fax or email) within 30 days from date when product arrive at the destination city and failure to do so shall constitute a waiver by customers for any and all such claims.

Certified by:



Quality Assurance Department

Oct/20//2023

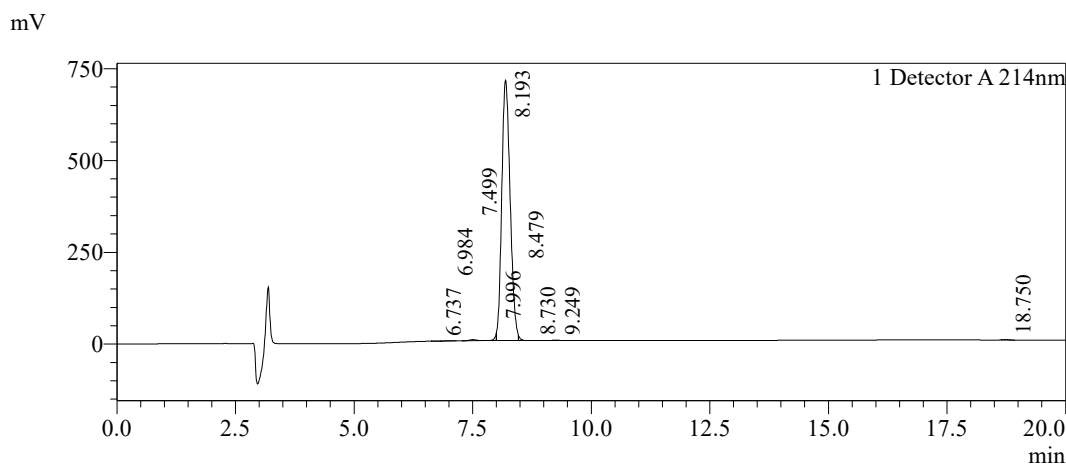


### Sample Information

Order ID :MTFA30481-5  
 Name :Development regulating peptide Hym-331  
 Sequence :GPPPGLW-NH2  
 Lot. No :MTFA30481-5-0915  
 Pump A :0.1%Trifluoroacetic in 100% water  
 Pump B :0.1%Trifluoroacetic in 100% acetonitrile  
 Total Flow :1ml/min  
 Wavelength :214nm  
 Analytical column type :Phenomenex Luna® 5 µm C18(2) (4.6\*250mm\*5 µm)  
 Dissolution method :100%H2O  
 Inj. Volume : 5ul

Time	Module	Action	Value
0.01	Pumps	B.Conc	25
20.00	Pumps	B.Conc	45
33.00	Pumps	B.Conc	100
38.00	Pumps	B.Conc	100
40.00	Pumps	B.Conc	25
50.00	Controller	Stop	

### Chromatogram

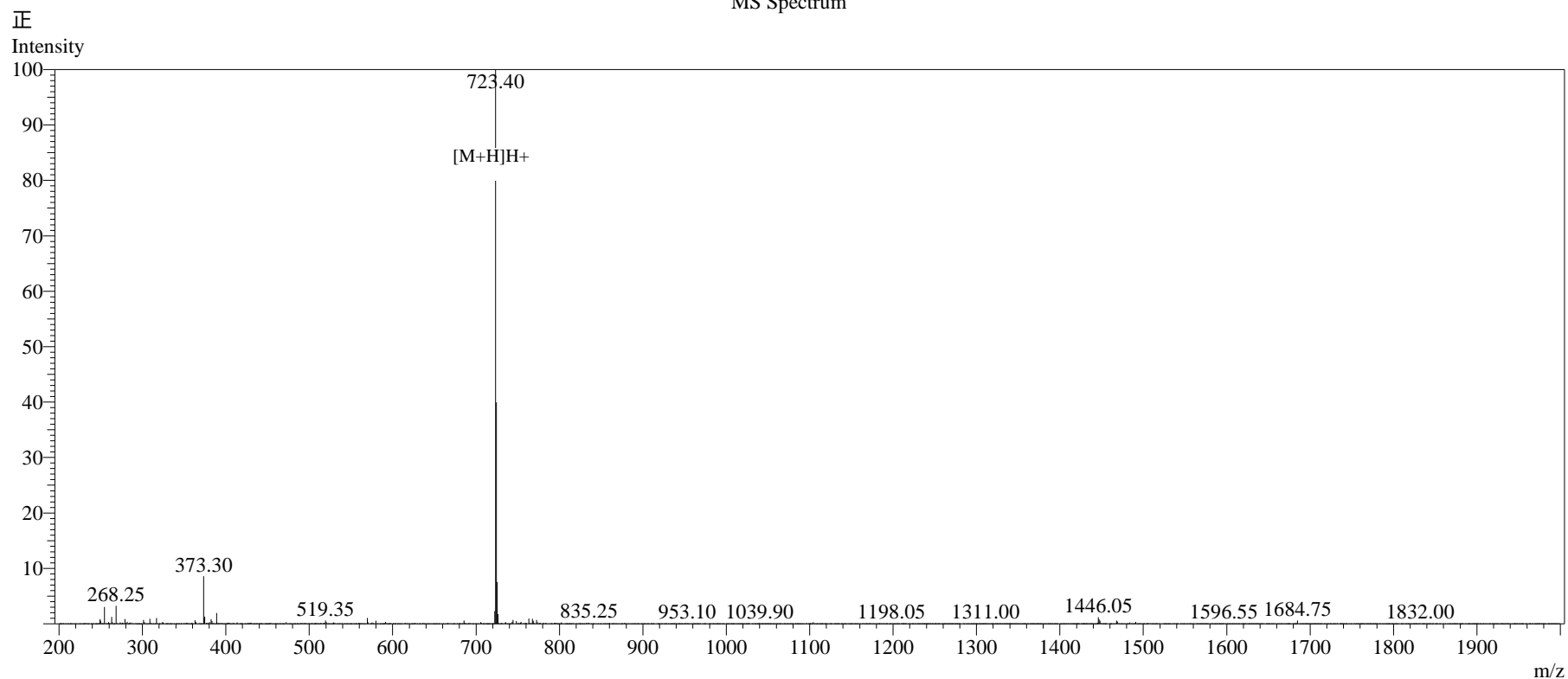


### Peak Table

Detector A 214nm

Peak#	Ret. Time	Area	Height	Area%
1	6.737	1995	297	0.023
2	6.984	3237	394	0.037
3	7.499	30642	2919	0.347
4	7.996	46545	15870	0.526
5	8.193	8703609	708699	98.425
6	8.479	30586	11912	0.346
7	8.730	1977	195	0.022
8	9.249	16765	1089	0.190
9	18.750	7554	1045	0.085
Total		8842910	742420	100.000

## MS Spectrum



## Sample Information

Dissolution method	:15% ACN+85% H <sub>2</sub> O	Interface	:ESI	Prerod Bias	:+4.5kv
Date Acquired	:2023/09/25 16:38:28	Nebulizing Gas Flow	:1.50L/min	Detector	:-0.2kv
Injection Volume	:0.2ul	CDL Temp	:250°C	T.Flow	:0.2ml/min
Block Temp	:200	CDL Volt	:0v	B.conc	:50% H <sub>2</sub> O/50% MEOH

Order ID	:MTFA30481-5
Name	:Development regulating peptide Hym-331
Sequence	:GPPPGLW-NH <sub>2</sub>
Lot.No	:MTFA30481-5-0915
Theoretical	:721.84
Observed	:722.40