

CERTIFICATE OF ANALYSIS

Product Name	CAMEL/CM15, Cat.#: 305842 (TFA removed)
Lot No.	MTFA32545-0312
Sequence	KWKLFKKIGAVLKVL-NH2 (Acetate Salt)
Dissolution condition	100%H2O
Length	15AA
Modification	acetate salt
Molecular Weight (MW)	1770.31
Storage	-20°C

Test Items	Specifications	Results
MW by MS	1770.80	Conforms
Purity by HPLC	>95%	96.650%
TFA content	N/A	N/A
Moisture content	N/A	N/A
Acetic acid content	N/A	N/A
Appearance	White to off-white lyophilized powder	Conforms
Quantity	20mg	5.0mg*4

NovoPro Bioscience Inc. (hereafter NovoPro) warrants material of said quality at the time of sale. It is the sole responsibility of the customers to determine the adequacy of all materials for any intended or specific purpose or use. NovoPro's sole obligation is to replace the material up to the extent of the purchase price. This warranty applies only to products in original packaging and does not apply to a product which has been tampered with or altered in any way in or which has been misused or damaged by accident or negligence. All claims must be received writing (by fax or email) within 30 days from date when product arrive at the destination city and failure to do so shall constitute a waiver by customers for any and all such claims.

Certified by:



Apr/08/2025

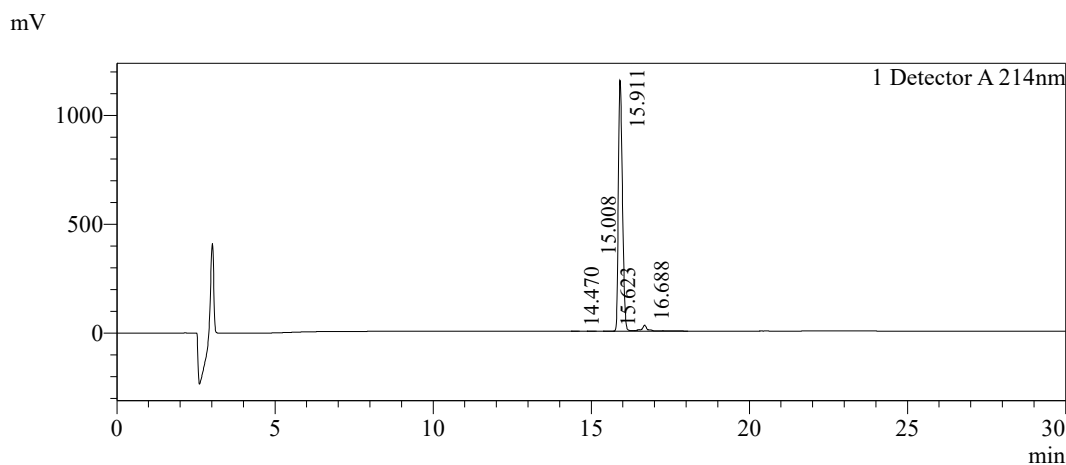
Quality Assurance Department



Sample Information

Order ID	:MTFA32545		
Name	:CAMEL/CM15		
Sequence	:KWKLFFKIGAVLKVL-NH2 (Acetate Salt)		
Lot. No	:MTFA32545-0312		
Pump A	:0.1%Trifluoroacetic in 100% water		
Pump B	:0.1%Trifluoroacetic in 100% acetonitrile		
Total Flow	:1ml/min		
Wavelength	:214nm		
Analytical column type	:Kromasil 100-5-C18 (4.6*250mm*5 µm)		
Dissolution method	:100%H2O		
Inj. Volume	: 15ul		
Time	Module	Action	Value
0.01	Pumps	B.Conc	25
30.00	Pumps	B.Conc	55
33.00	Pumps	B.Conc	100
38.00	Pumps	B.Conc	100
40.00	Pumps	B.Conc	25
50.00	Controller	Stop	

Chromatogram

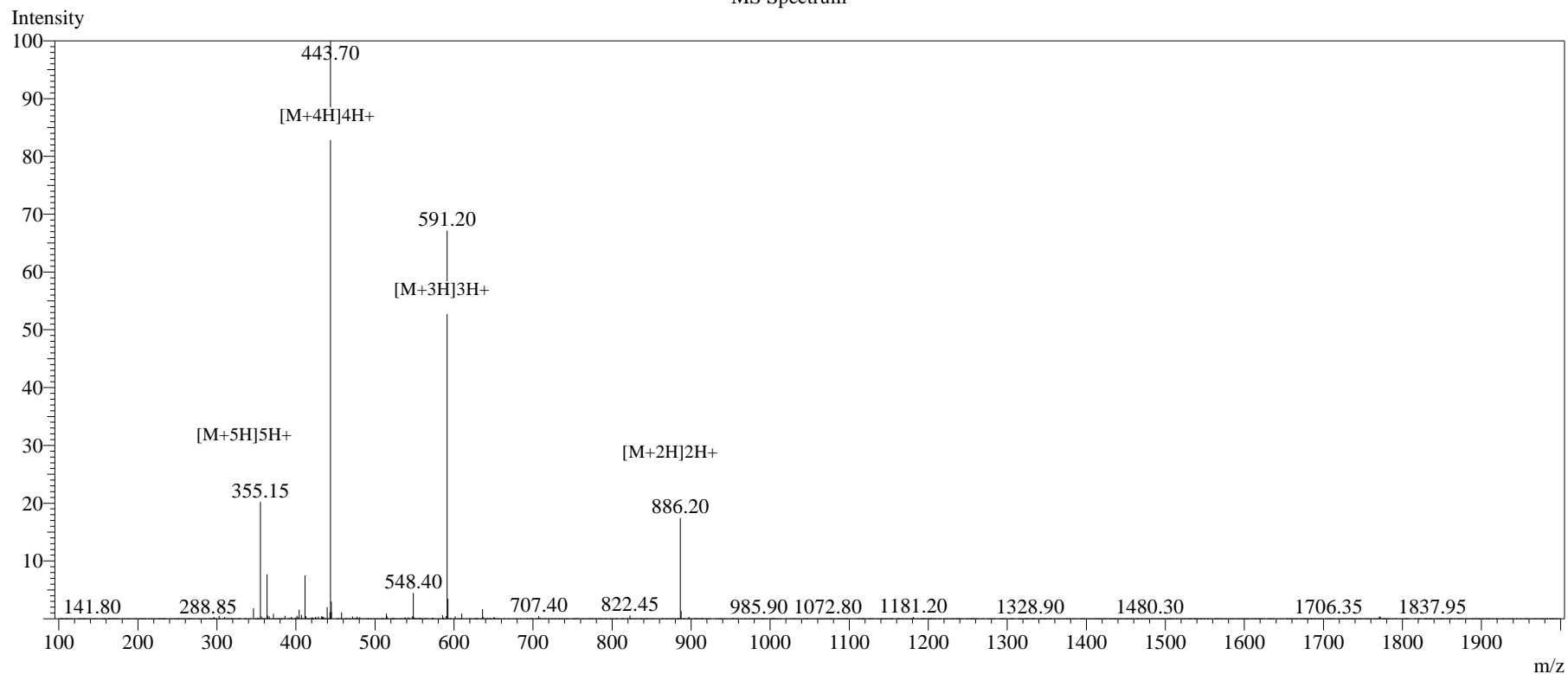


Peak Table

Detector A 214nm

Peak#	Ret. Time	Area	Height	Area%
1	14.470	763	105	0.007
2	15.008	1791	230	0.017
3	15.623	3340	298	0.031
4	15.911	10377374	1152600	96.650
5	16.688	353786	26998	3.295
Total		10737054	1180231	100.000

MS Spectrum



Sample Information

Dissolution method	:15% ACN+85% H ₂ O	Interface	:ESI	Prerod Bias	:+4.5kv
Date Acquired	:2025/04/07 11:35:54	Nebulizing Gas Flow	:1.50L/min	Detector	:-0.2kv
Injection Volume	:0.2ul	CDL Temp	:250°C	T.Flow	:0.2ml/min
Block Temp	:200	CDL Volt	:0v	B.conc	:50% H ₂ O/50% ME OH
Order ID	:MTFA32545				
Name	:CAMEL/CM15				
Sequence	:KWKLFFKIGAVLKVL-NH ₂ (Acetate Salt)				
Lot.No	:MTFA32545-0312				
Theoretical	:1770.31				
Observed	:1770.80				